



BIG SHIPS SMALL BOATS

The Ports of Sydney Harbour and Botany Bay have a proud history of sea trade. Sydney's ports facilitate over \$61 billion of trade each year, with an annual contribution to the New South Wales economy in excess of \$5 billion.

With hundreds of seagoing ship and large commercial vessel movements on these confined waterways, it is important skippers understand their responsibilities to ensure safety afloat for all concerned.

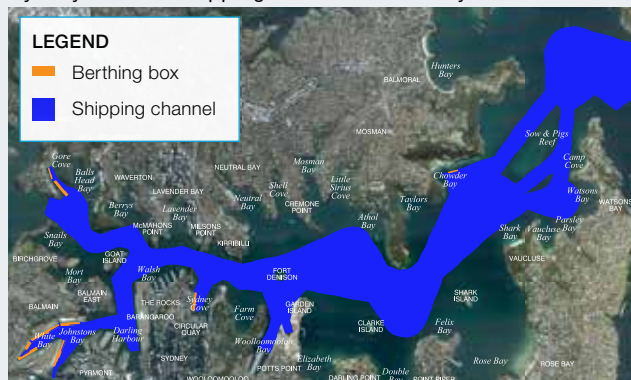
Simple steps to stay safe near seagoing ships

- ✓ Always keep a lookout for seagoing ships.
- ✓ Determine if the vessel is moving towards you or away from you.
- ✓ Always keep a safe distance away from a large vessel.
- ✓ Act early so you can move away from these seagoing ships and also make sure that they can clearly understand what you are doing.
- ✓ Always have your navigation lights on at night so other vessels can clearly see you.
- ✓ Familiarise yourself with the shipping channels or fairways.
- ✓ Stay clear of the channels or fairways when seagoing ships are entering or departing the ports.
- ✓ Be aware of wakes of seagoing ships, particularly when the large vessel is in relatively shallow water and moving at higher speeds.

Botany Bay shipping channels or fairways



Sydney Harbour shipping channels or fairways



Under the *NSW Marine Safety Act 1998* you are required by law to:

Never obstruct or impede –

- access to a fairway or channel;
- the use of any wharf, jetty, slip or landing place;
- the launching, exiting or securing of a vessel;
- the handling of cargo or movement of passengers;
- the safe navigation of a vessel.

For full details of the *NSW Marine Safety Act 1998* please go to http://www.sydneyports.com.au/port_operations/port_safety



STEER CLEAR

SAFETY NOTICE TO ALL BOAT OPERATORS

- Your vessel has been approached because it is:
- Anchored in a channel or fairway or
 - Obstructing or restricting a fairway or channel or
 - Obstructing the safe navigation of a vessel

STEER CLEAR



STEER CLEAR



BIG SHIPS

SMALL BOATS

The person in charge of the Sydney Ports Vessel that has approached you holds a delegation from the Harbour Master to direct you to move your vessel.

You should move your vessel clear of the channel immediately.

Failure to follow a direction from the Harbour Master may result in a fine.

The registration details of your vessel have been recorded.

In the future should you be approached again your details will be passed to NSW Maritime for further action.

Before heading out check the Daily Vessel Movements on the Sydney Ports website: www.sydneyports.com.au

- ✓ Listen to the safety broadcast from Sydney Ports' 24/7 Vessel Traffic Service (VTS) centre on VHF Channel 13 for details of vessel movements
- ✓ Monitor VHF Channel 13 for position reports from vessels
- ✓ Always keep a lookout for seagoing ships and **STEER CLEAR** of them

- ✗ **DO NOT** pass between the escort vessel and the seagoing ship
- ✗ **DO NOT** pass within 30 metres of the side or stern of a seagoing ship
- ✗ **DO NOT** anchor in a channel or fairway
- ✗ **DO NOT** block a channel or fairway

**24 HOUR HARBOUR OPERATIONS
VHF CHANNEL 13**

